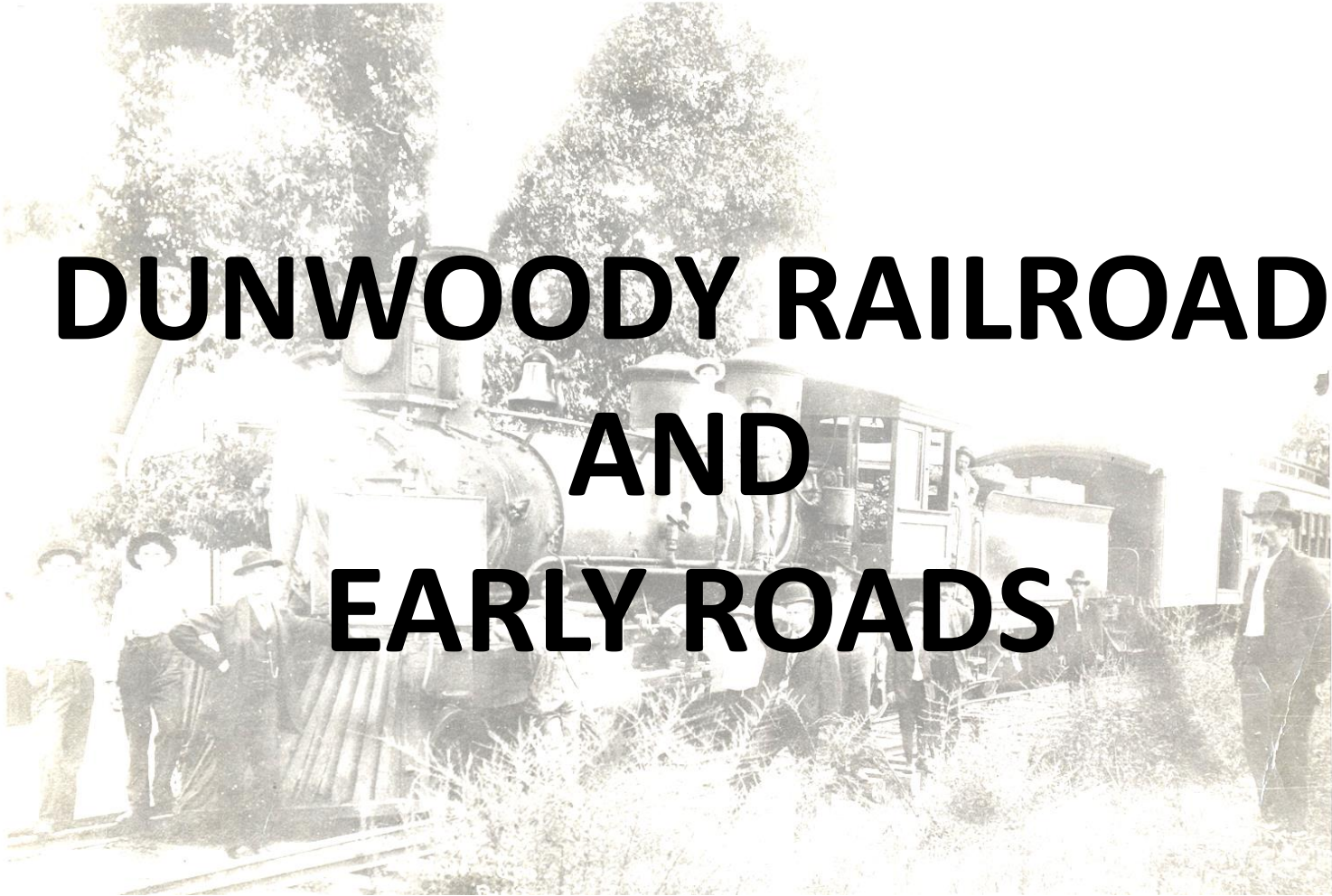
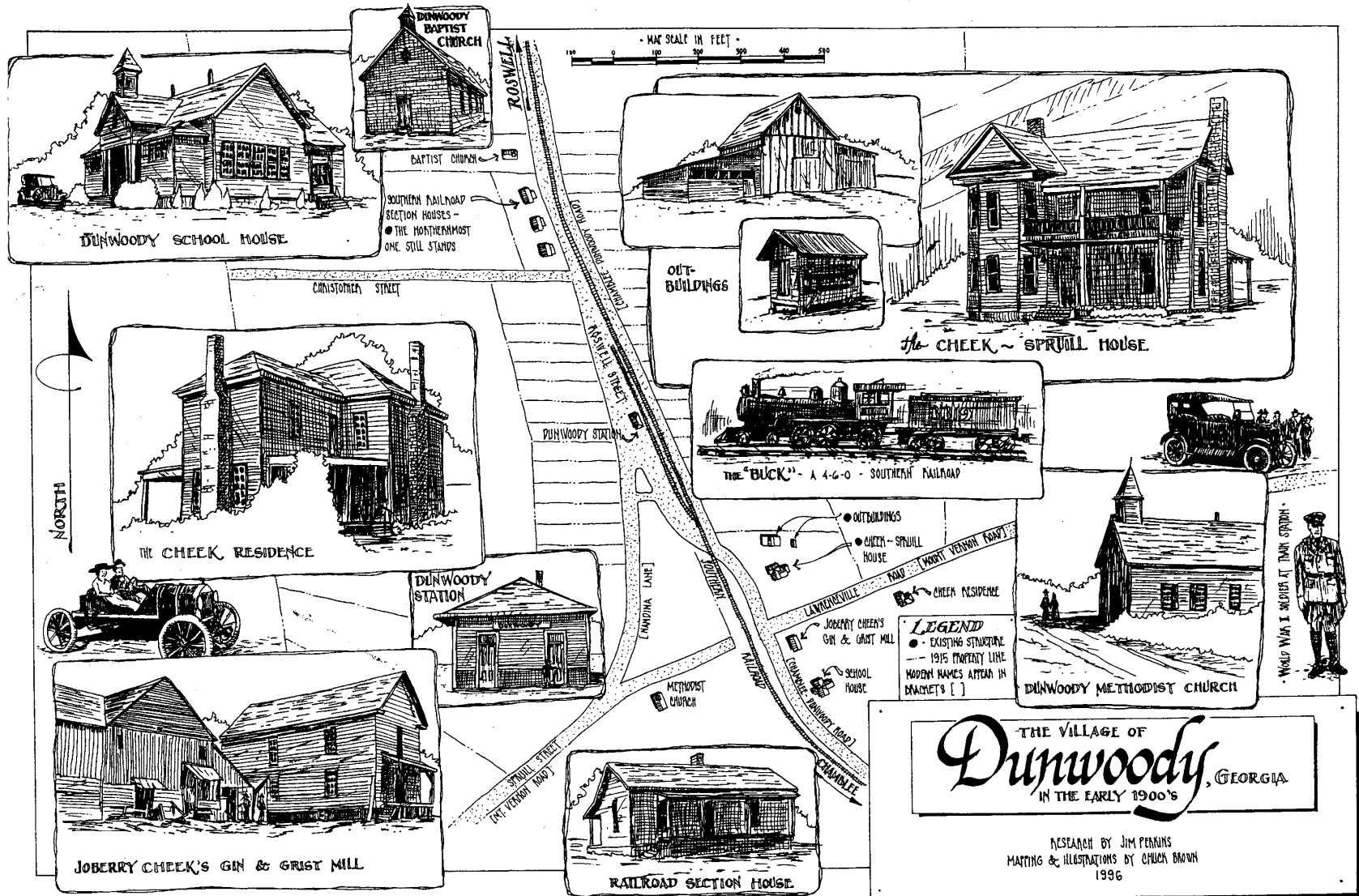


DUNWOODY RAILROAD AND EARLY ROADS



Dunwoody – a true crossroads railroad town



The Dinkey



Remember the Dinkey? It was a one-car train which ran from Chamblee to the Chattahoochee River across from Roswell, Ga., for 44 years. Engineer Ike Roberts, shown in the gangway, ran the Dinkey from the time the track

was laid in 1880 until the line was discontinued in 1924. It was owned by the Southern Railway. S. F. Lowe, 661 Francis Pl., NW, who collects photos of steam locomotives and train wrecks, receives \$5 for submitting this picture.

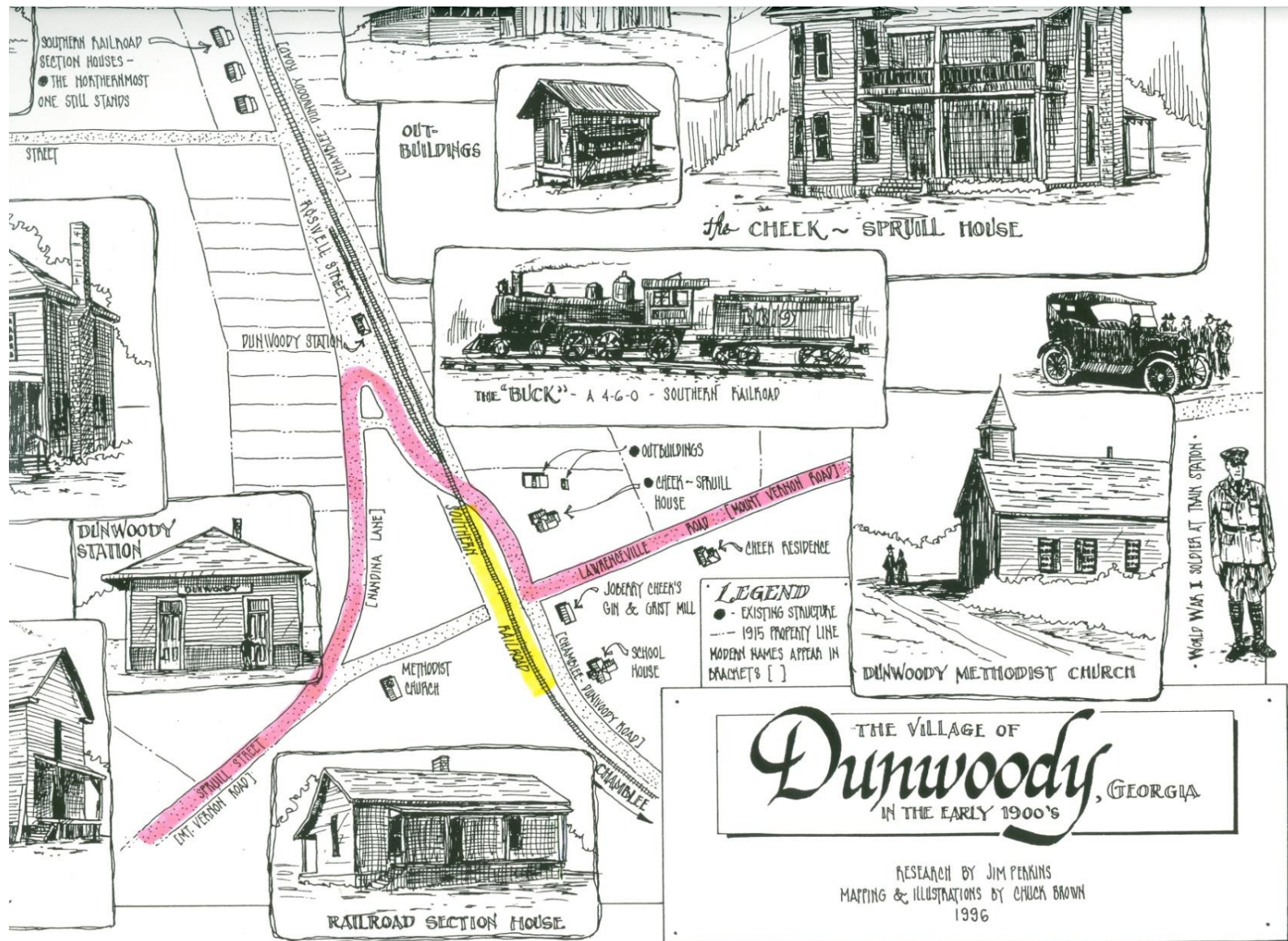
The Buck at the Chamblee Station



Chamblee Depot



The story behind Nandina Lane



The Dinkey

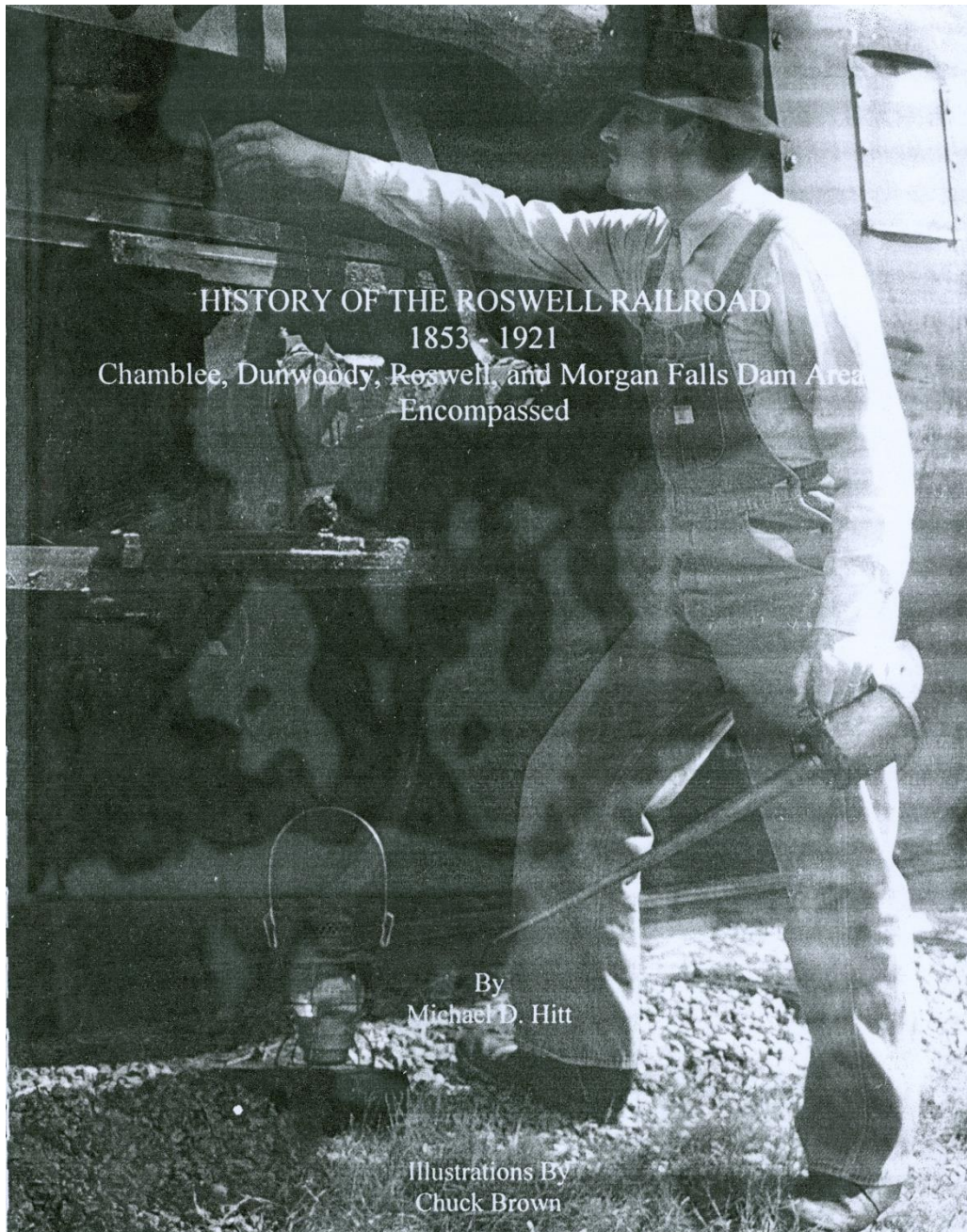


Remember the Dinkey? It was a one-car train which ran from Chamblee to the Chattahoochee River across from Roswell, Ga., for 44 years. Engineer Ike Roberts, shown in the gangway, ran the Dinkey from the time the track

was laid in 1880 until the line was discontinued in 1924. It was owned by the Southern Railway. S. F. Lowe, 661 Francis Pl., NW, who collects photos of steam locomotives and train wrecks, receives \$5 for submitting this picture.

The Roswell Depot





**Michael Hitt
dressed as
Isaac Roberts,
Engineer**

Images of Dunwoody “The Dutch House”



One of the favorite memories of people who attended Dunwoody School in the 1940s is the Dutch House. The small wooden house was built by Glenn Greer Austin, Nettie Austin's husband. Glenn was known to build many wooden toys for the school, as well as anything else the school needed,

so when it was time to study Holland, he built the Dutch House. He also built a small windmill and wooden shoes to make the experience complete. (Courtesy of the Austin family.)

Jim Perkins with piece of historic train rail

Historic Train Rails Discovered At Construction Site In Dunwoody

Special to the Crier

Back in January, Jim Perkins noted that construction of a Boston's Rotisserie Chicken was getting started at the site of the two railroad section houses, across from Dunwoody Village, which were removed last year. He introduced himself to the workers and alerted them to the possibility of finding some historic relics.

Last week, this small gesture paid off in a big way. Perkins received a phone call, went to the site, and was surprised to see two sections of rail from the line that ran between Roswell and Chamblee for 40 years, beginning in 1881. They are from the original narrow gauge line, which was replaced with standard gauge

in 1903. They were dug up in front of where the houses stood close to the edge of Chamblee Dunwoody Road.

Perkins expressed his great appreciation to the workers, who recovered the rails from dirt being hauled away and saved them from being gone forever.

Michael Hitt, Roswell historian, described this as a "major find." Hitt, who is writing a book on the history of the railroad, said that this is the only rail from the line which has been recovered. Before now, it was believed that all of the rail had been removed by the Southern Railroad, the owners in the latter years.

Somehow, these two sections were left behind.



CRIER
3/17/94

Dunwoody resident Jim Perkins describes how workmen discovered two sections of historic train rails (shown) from a line which ran between Chamblee and Roswell in the 1880s. The train rails were found in front of where two old houses stood close to Chamblee Dunwoody Road in Dunwoody Village before recent construction began.

Dunwoody Railroad Station



Railroad Section Gang

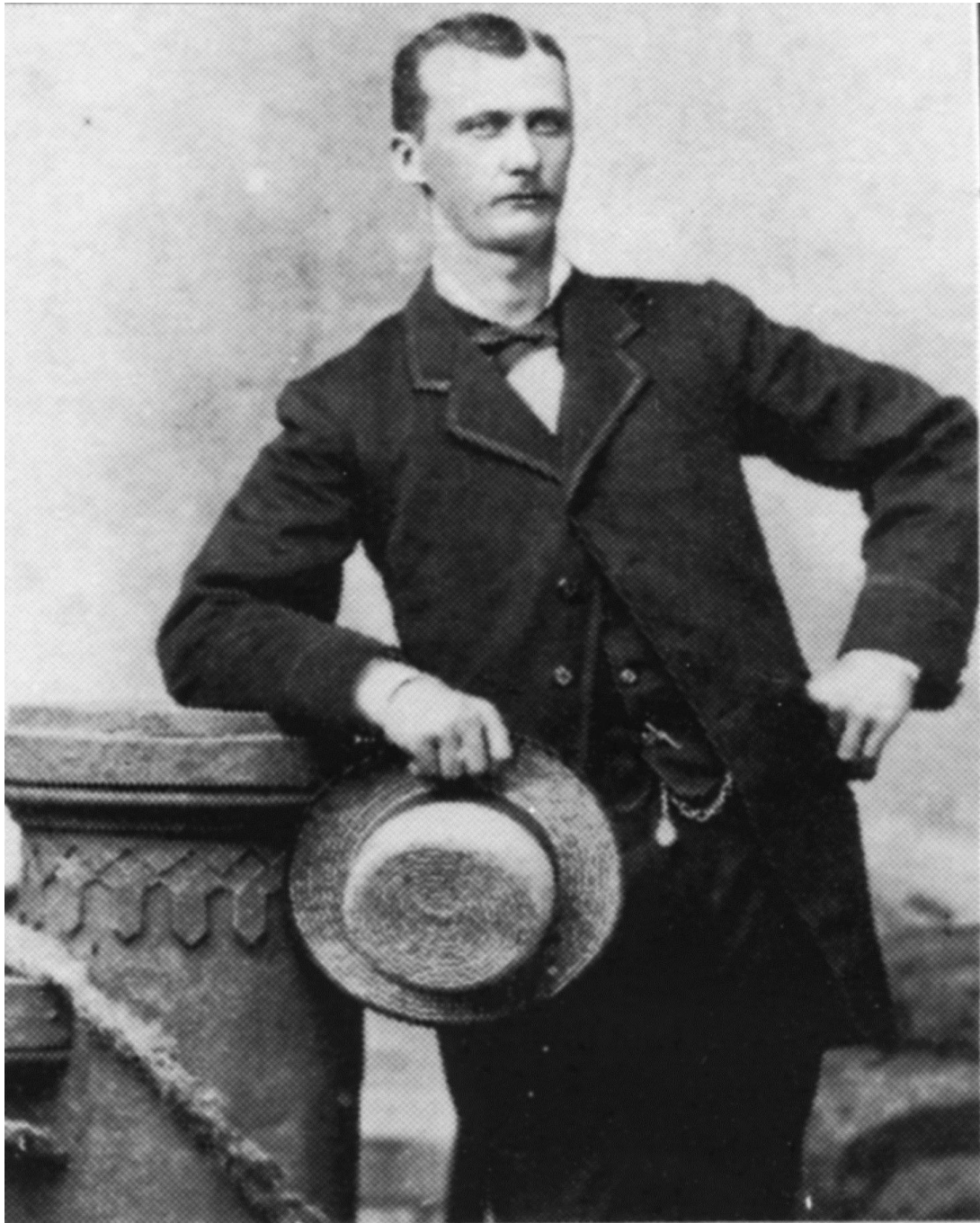


3 Railroad Section Houses

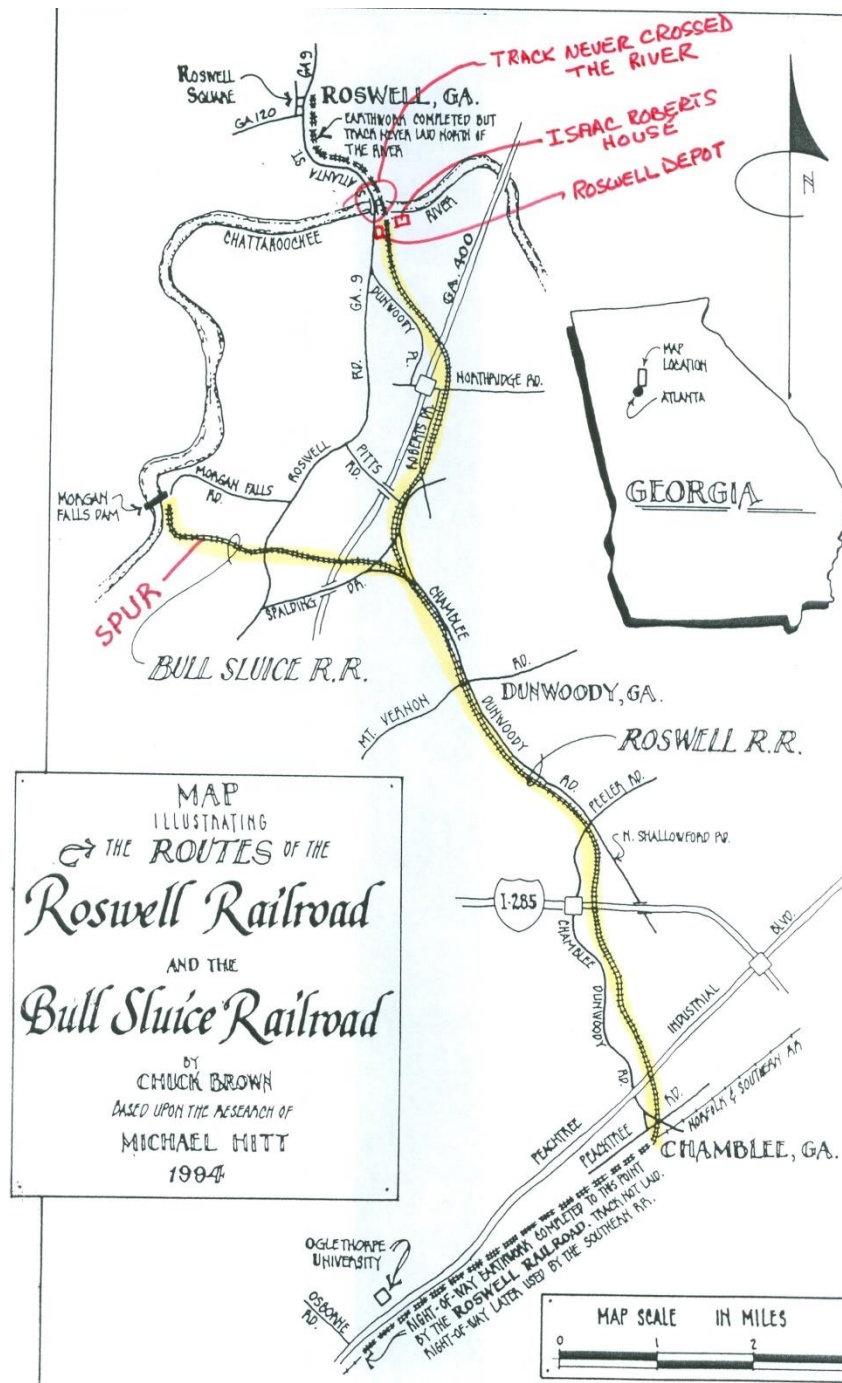


1994 – Two Section Houses demolished overnight





Isaac Roberts
The only
engineer



Routes of the Roswell Railroad



**Nancy
("Nannie")
Turley Roberts**



Ike and Nannie Roberts' children: front row, left to right, Alda Roberts Lyon and Edith Roberts Bowden; back row, left to right, Laura Roberts Wing, Lula Roberts Foster, and Sarah Roberts James. Taken in the mid-1930s.

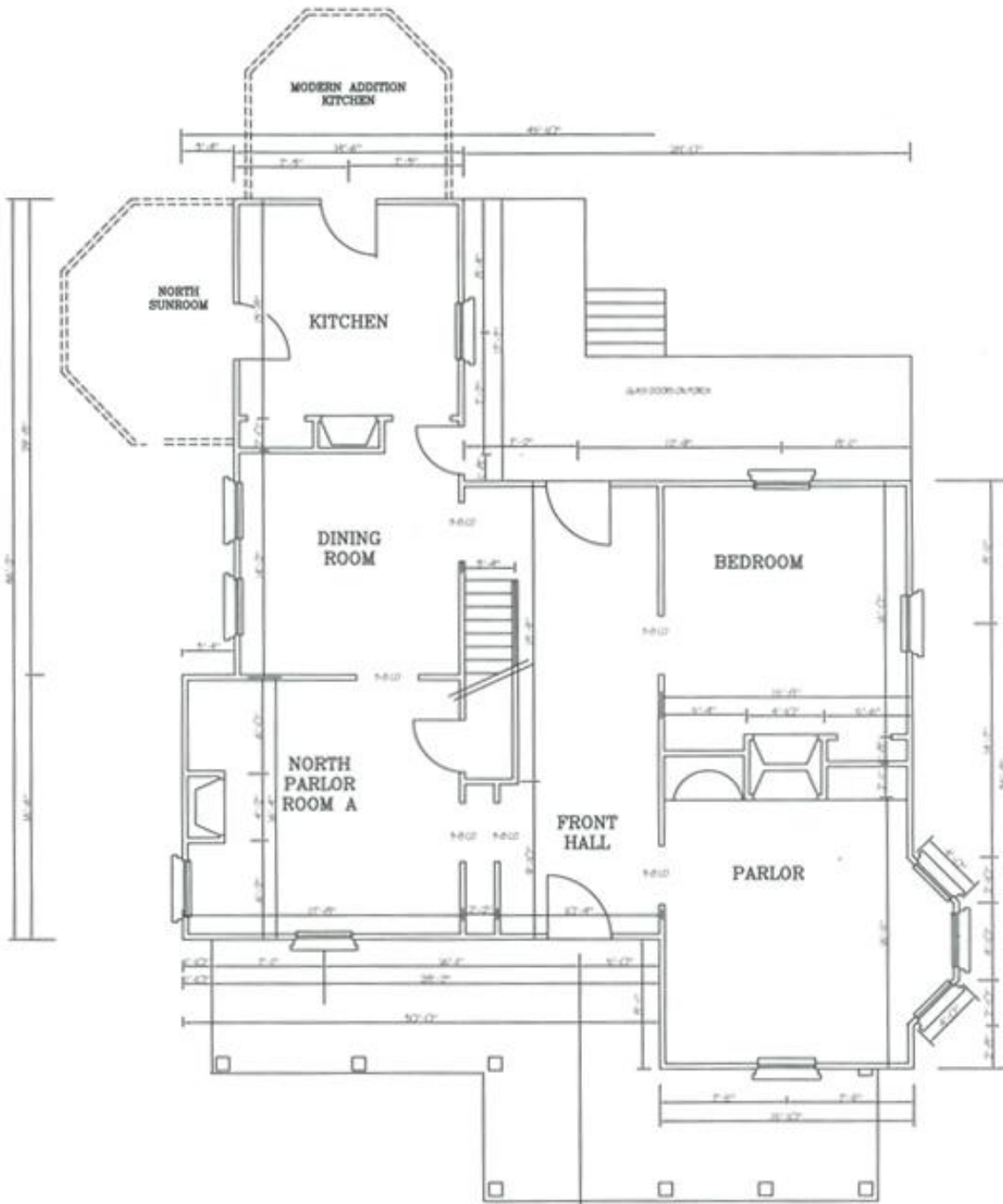
Robert's 5 girls and Wing (in-laws)



Left to right: Henry C. Wing, Jr.; Rufus Wing; Frances Wing (Morgan); and Rob Wing. Children of Henry C. Wing, Sr., and Laura Roberts Wing. Taken about 1925 at Great Oaks (in Roswell) where the Wings lived at that time.

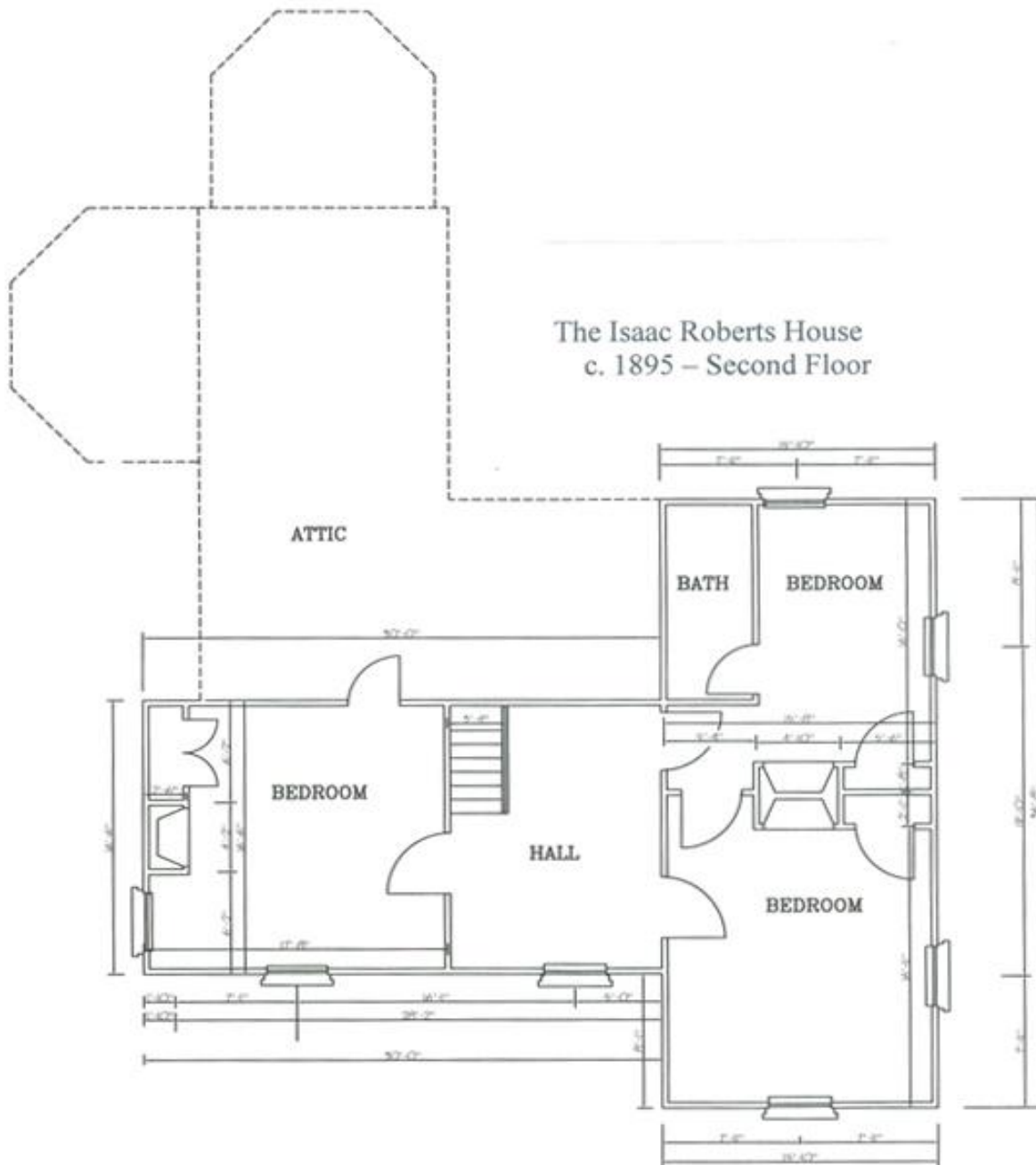
Isaac Roberts House as it appeared in 2008





Isaac Roberts House First Floor

The Isaac Roberts House
c. 1895 – Second Floor



Isaac Roberts House Second Floor

National Register Nomination

DUNWOODY CRIER

Page 3

Roberts House nominated for national register

The Georgia Department of Natural Resources, Historic Preservation Division nominated the Isaac Roberts House to be placed on the National Register of Historic Places January 26.

Present to accept this honor were Ruby and Lloyd Pittman, owners of the Victorian Queen Anne home since 1961. The house was built by "Ike" Roberts, the only engineer of the train that ran from Chamblee through Dunwoody and down to the Chattahoochee river for 41 years, from 1880 to 1921.

The train was nicknamed "The Dinkey" or "Old Buck." The house sits on 2.8 acres on the north side of Roberts Drive near Roswell Road in Sandy Springs. The nomination will now go to the federal level for final certification.

Mr. and Mrs. Pittman asked the Dunwoody Preservation Trust to consult with them to apply for National Register status for the beautiful home with 11 foot ceilings, eight fireplaces and three chimneys. They have carefully preserved the archways and gable details and stained glass windows, while updating some interior features for modern living.

The Roberts House is the second historic structure to be nominated and placed on the National Register by the Dunwoody Preservation Trust, the first being the CheekSpruill House (Farmhouse/Dunwoody Town Hall), in 1997. The Roberts House,



Celebrating the Roberts House nomination are (l-r) Denise Nissick, National Register historian, Lynne Byrd, consultant with the Dunwoody Preservation Trust, Danny Ross, co-president of the Dunwoody Preservation Trust, W. Ray Luce, Division Director, State Historic Preservation Officer, Dr. Glen Eskew, chair of the National Register Review Board, Mrs. Ruby Pittman and Mr. Lloyd Pittman, owners of the Isaac Roberts House.

located in Sandy Springs was nominated for architectural and historical significance. A celebration of this honor will be held in the Spring.

The Annual Founder's Day open house, hosted by the Dunwoody Preservation Trust,

will be Sunday, February 11th at 3:30 at the Cheek-Spruill Farmhouse at the corner of Chamblee Dunwoody and Mt. Vernon Roads. The public is invited for refreshments and to see what the trust is currently planning for Dunwoody.

View from Roberts Road



Front Door





**View of Hall
looking toward
front door**

Dining Room





**View of right
Parlor**



**Another view of
right Parlor**

Left Parlor



Another view of left Parlor



Top landing - looking into bedroom



An upstairs bedroom



Another upstairs bedroom



Kitchen area, looking into modern glass breakfast area



View of house from Chattahoochee River



A modern garage built to look like old barn



View of glassed in porch



View of the well house



Front yard landscaping



Top floor porch



View from the front yard



Glassed in back porch



The attic

(see knob and tube wiring)

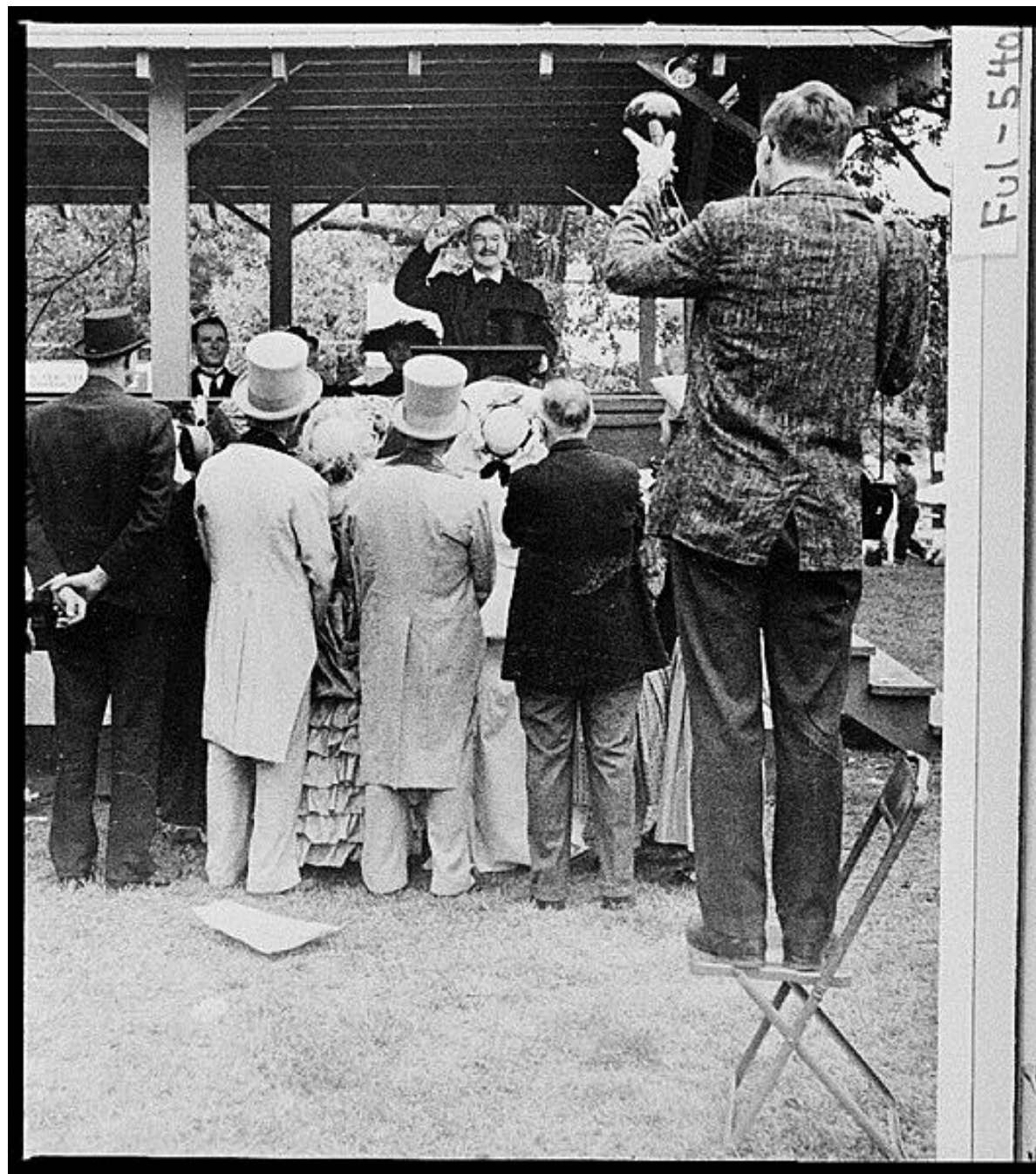




Hattie Wing in satin dress and modish pompadour, with Bartow Wing at her side, greeted President Theodore Roosevelt at the Roswell railroad station in 1905.

**President
Roosevelt
visits
his mother's
childhood
home in 1905**

President's visit to Bulloch Hall



**President
Roosevelt
at Roswell RR
Station**



**The
President
rides from
the
railroad
station to
Bulloch Hall**

F01-539



**President
Roosevelt in
front of
Bullock Hall,
with Wing
Family**